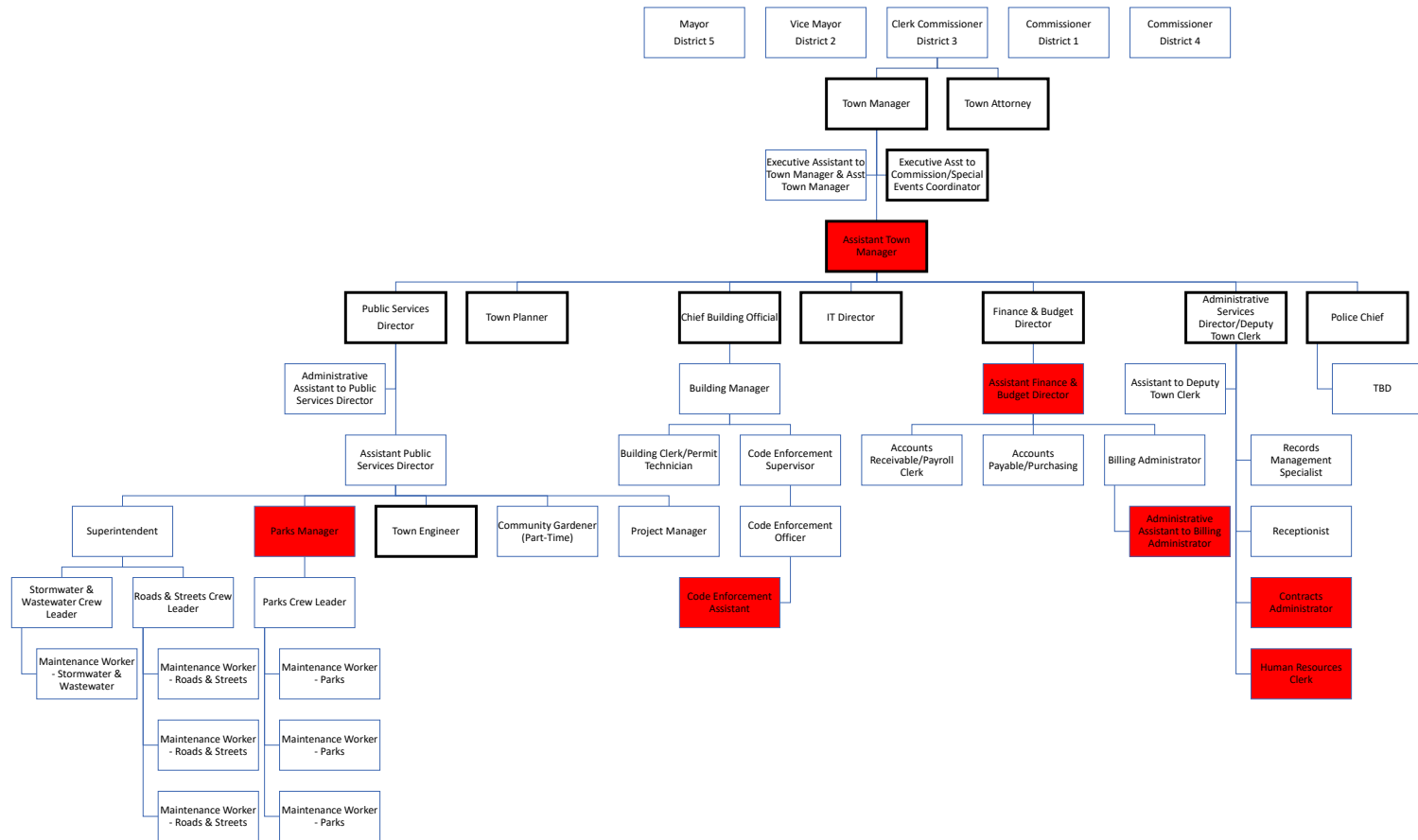


# Town of Pembroke Park

## Recommended Organizational Chart

Town of Pembroke Park is a Commission Form of Government  
Updated 10/14/2020



Dotted Line Reporting: describes the relationship between an employee and a secondary supervisor/leader that provides additional oversight and guidance to the employee in the execution of his/her work. The secondary supervisory/leader has some degree of influence, but the position officially reports to the other supervisor/leader directly. Dotted Line Reporting should serve as a professional relationship where all involved employees are able to share information in order to execute their various duties and assignments.

Town Mayor & Commission Dotted Line Reporting: Each Town of Pembroke Park Elected Official has a dotted line reporting structure with certain Department Heads/Directors for their specific area of focus. Refer to the Executive Summary for more information. Dotted Line Reporting for Employees: All employees that report directly to the Town Mayor & Commission have a dotted line reporting to the Town Manager, as all positions within the Town fall under the supervision and direction of the Town Manager. \*It is important to note that the positions of Executive Assistant and Administrative Assistant are NOT higher ranking positions, but simply may show "above" in the org chart in comparison to other positions in order to accurately reflect the direct reporting structure.